

QUILEUTE TRIBAL SCHOOL

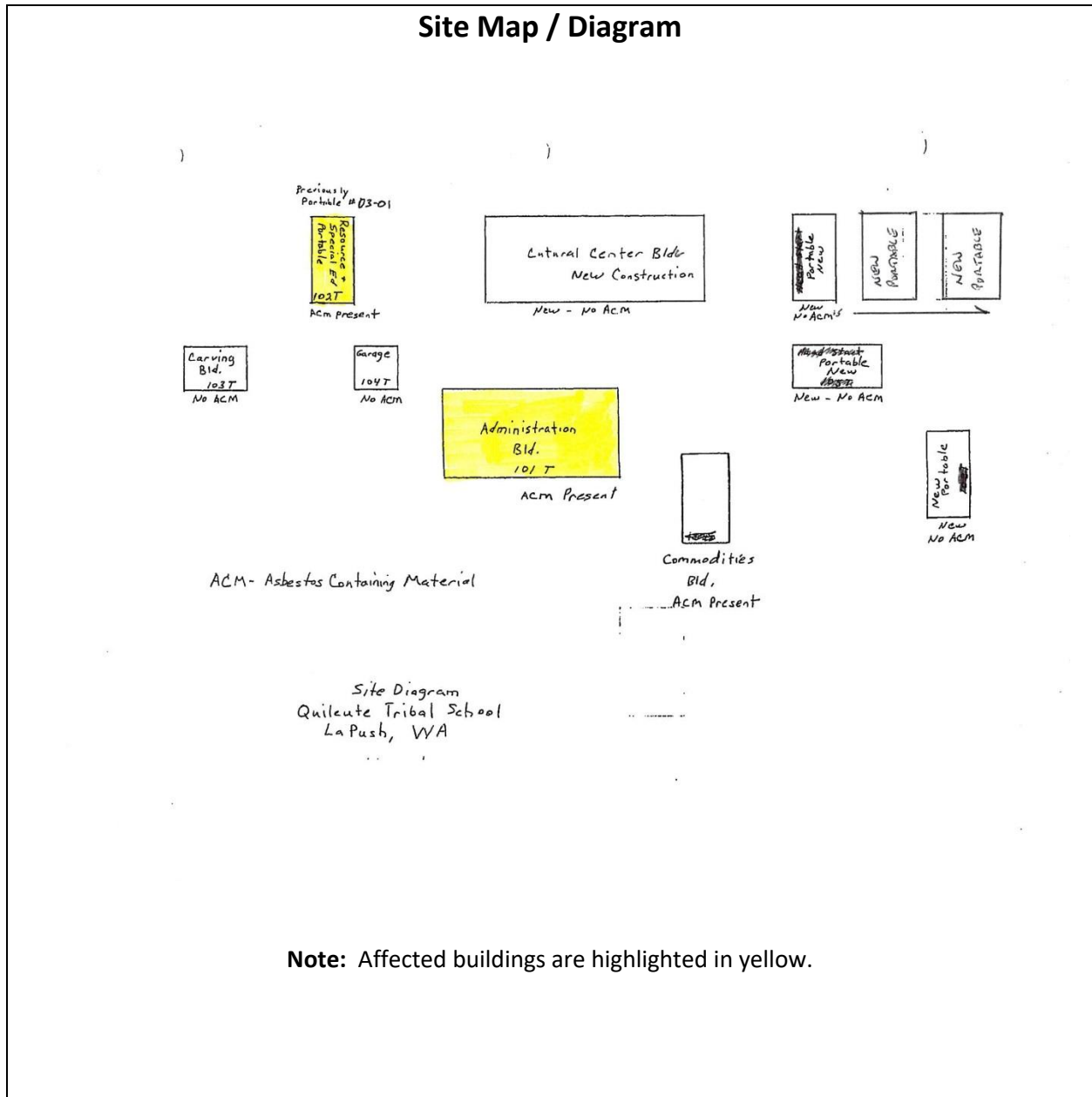


Asbestos

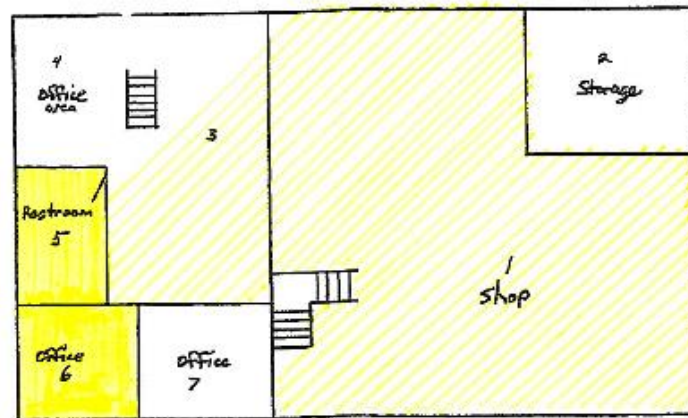
Location Details

November 16, 2016

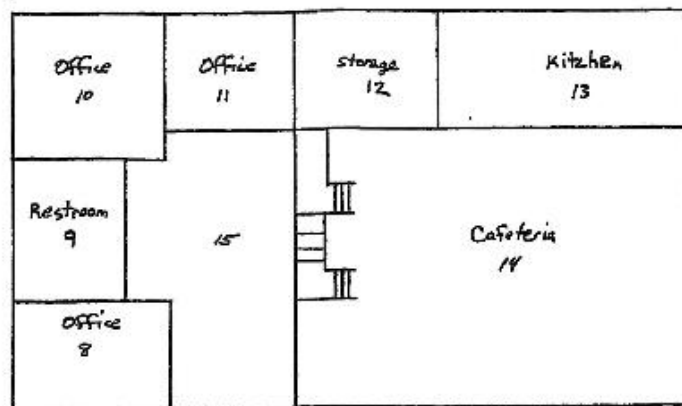
TRIBAL SCHOOL ASBESTOS LOCATION DETAILS



TRIBAL SCHOOL ASBESTOS LOCATION DETAILS



Basement



First Floor

Administration Building

Note: Affected rooms are highlighted in yellow. Area of possible wiring contamination is shown with yellow cross hatch.

TRIBAL SCHOOL ASBESTOS LOCATION DETAILS



Old Administration Building (101T) - looking West



Old Administration Building (101T) - looking East

Testing confirmed portions of building contain asbestos.

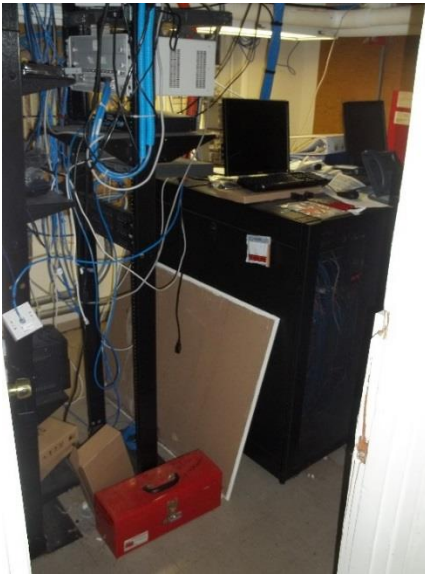


Old Administration Building (101T) – SW Corner Basement Office 6
[9" floor tiles and mastic of 3% Chrysotile]



Old Administration Building (101T) – SE Corner Basement Office 6
[9" floor tiles and mastic of 3% Chrysotile]

TRIBAL SCHOOL ASBESTOS LOCATION DETAILS



**Old Administration Building (101T) –
Basement Office 6**

View is looking SW in through the doorway
into the phone equipment room.



**Old Administration Building (101T) – Basement
Office 6**

View is looking at floor in through the doorway
into the phone equipment room.
[9" floor tiles and mastic of 3% Chrysotile]



**Old Administration Building (101T) – Old
Basement Restroom 5**

[Area confirmed to contain asbestos in
WAT 07-29-2016 sample.]



**Old Administration Building (101T) – Restroom
5 Doorway Layer Detail**

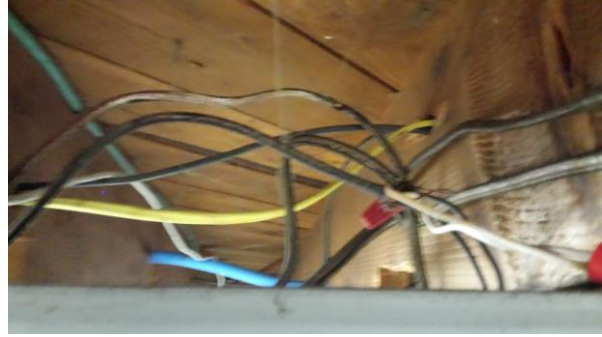
[9" gray floor tiles and mastic of 2% and 4%
Chrysotile, respectively. Yellow vinyl is non-
asbestos containing per WAT 07-29-2016
sample.]

TRIBAL SCHOOL ASBESTOS LOCATION DETAILS



Old Administration Building (101T) – Outside Restroom 5

View is looking up at the area where WAT Sample #4 was taken – a non-asbestos wire sample.



Old Administration Building (101T) – Shop 1
View is looking at assorted ceiling wiring.



Old Administration Building (101T) – Sample of Old Basement Office Wiring on West End
[Area of possible asbestos containing material]



Old Administration Building (101T) – Sample of Old Basement Office Wiring
[Area of possible asbestos containing material]

TRIBAL SCHOOL ASBESTOS LOCATION DETAILS



Old Administration Building (101T) – Sample of Old Basement Office Wiring on West End
[Area of possible asbestos containing material]



Old Administration Building (101T) – Sample of Old Basement Office Wiring on East End
[Area of possible asbestos containing material]



Old Administration Building (101T) – Sample of Old Basement Office Wiring on West End
[Area of possible asbestos containing material. WAT 07-29-2016 sample indicated non-asbestos material.]



Old Administration Building (101T) – Sample of Old Basement Office Wiring on West End

TRIBAL SCHOOL ASBESTOS LOCATION DETAILS

Class 1	RR 2	Class 5
	3	
	4 RR	

portable 03-01 102T

Class	Restroom	Restroom	Class
	Restroom	Restroom	

New Portable 108T

Note: Affected rooms are highlighted in yellow.

TRIBAL SCHOOL ASBESTOS LOCATION DETAILS



Culture Building (102T) – Picture Shows the SW Corner of the Building



Culture Building (102T) – Picture Shows the NW Corner of the Building



Culture Building (102T) – Classroom 5
Original floor covering has been hidden by wall-to-wall carpet.
[Sheet vinyl flooring with 30% Chrysotile]



Culture Building (102T) – NE Corner of Classroom 5
Original floor covering has been hidden by wall-to-wall carpet.
[Sheet vinyl flooring with 30% Chrysotile]

TRIBAL SCHOOL ASBESTOS LOCATION DETAILS



Culture Building (102T) – Hallway to Classroom 5

Original floor covering has been hidden by wall-to-wall carpet in classroom and hallway is original material.

[Sheet vinyl flooring with 30% Chrysotile]



Culture Building (102T) – NW Corner of Classroom 1

This is original floor covering.

[Sheet vinyl flooring with 30% Chrysotile]



Culture Building (102T) – SW Corner of Classroom 1

This is original floor covering.

[Sheet vinyl flooring with 30% Chrysotile]



Culture Building (102T) – Exit Doorway from Classroom 1

This is the original floor covering covered by a throw rug.

[Sheet vinyl flooring with 30% Chrysotile]

TRIBAL SCHOOL ASBESTOS LOCATION DETAILS



**Culture Building (102T) – SE Corner Doorway
Detail in Classroom 1**

Original floor covering with trim removed and
no apparent damage.

[Sheet vinyl flooring with 30% Chrysotile]



**Culture Building (102T) – Floor Covering
Crack Detail in Classroom 1**

This is original floor covering.

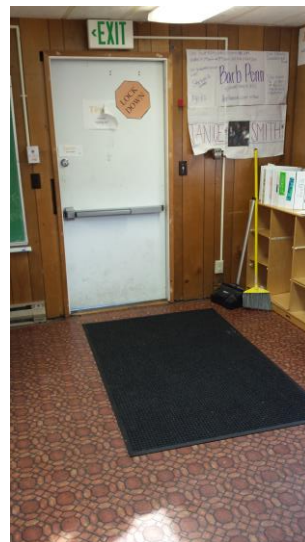
[Sheet vinyl flooring with 30% Chrysotile]



**Culture Building (102T) – Floor Covering
General Area of Crack in Classroom 1**

This is original floor covering.

[Sheet vinyl flooring with 30% Chrysotile]



**Culture Building (102T) – Exit Doorway from
Classroom 1 with Floor Mat Covering
Damaged Floor**

[Sheet vinyl flooring with 30% Chrysotile]